



**Project: MOE – FLS Reference  
Designs for Standard Classroom  
Upgrade – Canterbury Block**  
Fire Engineering Report

**Project No.** 246313  
**Prepared for:** Ministry of  
Education  
**Report ref:** Rev B  
**29 October 2015**

# Document Control Record

Document prepared by:

Franky Wee, BBSc

Aurecon New Zealand Ltd

Level 1, 102 Customhouse Quay

Wellington 6011

PO Box 1591

Wellington 6140

New Zealand

**T** +64 4 472 9589

**F** +64 4 472 9922



**E** fire@aurecongroup.com

**W** www.aurecongroup.com

A person using Aurecon documents or data accepts the risk of:

- Using the documents or data in electronic form without requesting and checking them for accuracy against the original hard copy version.
- Using the documents or data for any purpose not agreed to in writing by Aurecon.

Document control							aurecon
Report Title		Fire Engineering Report					
Document ID		Rev B	Project Number		246313		
File Path		P:\246313\03 Project Delivery\Reports\Fire\Canterbury					
Client		Ministry of Education	Client Contact				
Rev	Date	Revision Details/Status	Prepared by	Author	Verifier	Approver	
A	18 September 2015	For information	F Wee	F Wee	T Gazley	J Martins	
B	29 October 2015	Updated for new MOE design guideline and wording	F Wee	F Wee	T Gazley	J Martins	
Current Revision		B					

Approval			
Author Signature		Approver Signature	
Name	Franky Wee (BBSc)	Name	Jack Martins
Title	Fire Engineer	Title	Technical Director (Buildings)

# MOE – FLS Reference Designs for Standard Classroom Upgrade – Canterbury Block

Date | 29 October 2015  
Reference | Rev B  
Revision | B

Aurecon New Zealand Ltd

Level 1, 102 Customhouse Quay  
Wellington 6011  
PO Box 1591  
Wellington 6140  
New Zealand

**T** +64 4 472 9589  
**F** +64 4 472 9922  
**E** [fire@aurecongroup.com](mailto:fire@aurecongroup.com)  
**W** [www.aurecongroup.com](http://www.aurecongroup.com)

# Contents

<b>1</b>	<b>Executive Summary</b>	<b>3</b>
<b>2</b>	<b>Scope of Works</b>	<b>4</b>
2.1	Active Fire Safety Systems and Fire Fighting	4
2.1.1	Type 2 Manual Fire Alarm System	4
2.2	Passive Fire Safety Systems	4
2.2.1	Internal Surface Finishes	4
2.2.2	Flooring	5
2.2.3	Suspended Flexible Fabrics	5
2.3	Egress Systems	5
2.3.1	Egress Routes	5
2.3.2	Egress Height Requirements	5
2.3.3	Egress Width Requirements	5
2.3.4	Locking Devices	5
2.3.5	Simple Fastenings	6
2.3.6	Signs	6
<b>3</b>	<b>Fire Drawings</b>	<b>7</b>
<b>4</b>	<b>Design Philosophy</b>	<b>8</b>
4.1	Legal Environment	8
4.2	Design Philosophy	8
4.3	Information Reviewed	8
4.4	Distribution	8
<b>5</b>	<b>Building Description and Use</b>	<b>9</b>
5.1	Introduction and Description of Proposal	9
<b>6</b>	<b>Fire Safety Assessment</b>	<b>11</b>
6.1	Building Importance Level	11
6.2	Evacuation Scheme	11
6.3	Occupant Assessment	11
6.3.1	General	11
6.3.2	Occupant Load	11
6.4	Fire Safety Systems and Fire Resistance Ratings	12
6.4.1	Provision of Firecells	12
6.4.2	Overall Fire Safety Systems	12
6.5	Means of Escape	12
6.5.1	Number and Location of Escape Routes	12



6.5.2	Escape Route Heights	13
6.5.3	Escape Route Widths	13
6.5.4	Escape Route Lengths	13
6.5.5	Door Opening and Locking devices	15
6.5.6	Exit Signage	15
6.5.7	Emergency Lighting	15
6.6	Internal Spread of Fire and Smoke	15
6.6.1	Fire/Smoke Separations	15
6.6.2	Surface Finishes	15
6.7	External Fire Spread	15
6.7.1	Horizontal Fire Spread	15
6.7.2	External Surface Finishes	16
6.8	Fire Fighting	16
6.8.1	Fire Service Vehicular Access	16
6.9	Conclusion	16

# 1 Executive Summary

The standard single-storey, four-classroom Canterbury Block of Ministry of Education (MOE) is a standard classroom block constructed at various schools throughout New Zealand. Construction consists of a light-weight timber frame with weatherboard or brick façade and corrugated iron roofing. Typically, existing Canterbury Blocks consisted of four classrooms with shared cloakroom and toilets.

The proposed work is to upgrade the existing standard four-classroom Canterbury Block to become a “Flexible Learning Space (FLS)” upgrade of MOE, previously referred to as “Modern Learning Environment (MLE)”. Three options of similar layout have been considered for the Canterbury Block FLS upgrade - options 1, 2 and 3.

Option 1 consists of four interconnected classrooms equivalent in size with two breakout rooms and two toilet and bag storage areas.

Option 2 also consists of four interconnected classrooms equivalent in size but with two breakout rooms, two toilets and a resource room.

Option 3 also consists of four interconnected classrooms equivalent in size but with three breakout rooms and a toilet.

This fire engineering report has assessed compliance of Options 1 to 3 in respect to the fire safety clauses C1 to C6 ‘Protection from Fire’ of the New Zealand Building Code (NZBC). Acceptable Solutions C/AS4 amendment 3 has been used as the design basis for this report.

## Ministry of Education Requirements

*Within this report comments have been included in shaded boxes similar to this that review the building against the Ministry of Education (MOE) Fire and Safety Design Requirements for Schools 2008. The MOE Fire and Safety Design Requirements for Schools 2008 generally require fire safety provisions and features that are more onerous than those of NZBC C/AS1 and specifically relate to property protection. The M.O.E Designing Schools in New Zealand- Requirements and Guidelines (v. 1.0) October 2015 has also been referenced wherever applicable.*

*Where applicable the Fire Safety Precautions as governed by the MOE Fire and Safety Design Requirements 2008 and/or M.O.E Designing Schools in New Zealand- Requirements and Guidelines (v. 1.0) October 2015 are noted throughout this report for the Schools information are noted throughout this report for the Schools information.*

*It is to be noted that the MOE Fire and Safety Design Requirements for Schools 2008 are not required for New Zealand Building Code compliance.*

The design is considered to comply with the Building Code fire safety clauses, and the MOE requirements, subject to the following requirements which are detailed in section 2 Scope of Works.

## 2 Scope of Works

The following scope of works is a general description of the active, passive and egress systems. It is not a specification of works.

### 2.1 Active Fire Safety Systems and Fire Fighting

#### 2.1.1 Type 2 Manual Fire Alarm System

Install a Type 2 manual fire alarm system consisting of manual call points and sounders throughout the Canterbury Block. The system shall be designed, installed and comply with the Standard NZS 4512:2010 "Fire detection and alarm systems in buildings".

Where there is an existing fire alarm system installed it shall be inspected for compliance with NZS 4512 and be upgraded if required.

The fire alarm should be interfaced with the school alarm system and on activation of any detector or call point shall sound a school-wide evacuation. The alarm system need not be connected to the Fire Service.

The fire alarm system shall be subject to FPIS (or equivalent) inspection and certification.

### 2.2 Passive Fire Safety Systems

#### 2.2.1 Internal Surface Finishes

New surface finish requirements for walls, ceilings, ducts and insulation are as specified in Table 1, tested to ISO 9705:1993 "Fire tests: Full-scale room test for surface products".

**Table 1: Internal surface finishes**

Area of building	Maximum permitted group number
Internal surfaces of duct for HVAC systems	1S
New wall and ceiling linings in crowd spaces 1.2 m or more above floor level (classrooms and breakout rooms)	2S
External surfaces of duct for HVAC systems	3
New wall in crowd spaces less than 1.2 m above floor level (classrooms and breakout rooms)	
Walls and ceilings in all other occupied spaces	

If foamed plastics building materials or exposed combustible insulating materials form part of a wall, ceiling or roof system, the completed system shall achieve requirements as specified in Table 1 and the foamed plastics shall comply with the flame propagation criteria as specified in AS 1366 for the material being used.

Surface finish requirements do not apply to:

- Small areas of non-conforming product within a firecell with a total aggregate surface area of not more than 5.0 m<sup>2</sup>;
- Electrical switches, outlets, cover plates and similar small discontinuous areas;
- Pipes and cables used to distribute power or services;
- Handrails and general decorative trim such as architraves, skirtings and window components including reveals, provided these do not exceed 5 % of the surface area of the wall or ceiling they are part from;

- Damp-proof courses, seals, caulking, flashings, thermal breaks and ground moisture barriers;
- Timber joinery and structural timber building elements constructed from solid wood, glulam or laminated veneer lumber. This includes heavy timber columns, beams, portals and shear walls not more than 3.0 m wide, but does not include exposed timber panels or permanent formwork on the underside of floor/ceiling systems;
- Individual doorsets; and
- Continuous areas of permanently installed openable wall partitions having a surface area of not more than 25% of the divided room floor area or 5.0 m<sup>2</sup>, whichever is less;
- Uniformly distributed roof lights where
  - The total area does not exceed 15 % of the ceiling area (in plan), and
  - The minimum floor to ceiling height is not less than 6 m, and
  - The roof lights achieve a Group Number not greater than 3.

### 2.2.2 Flooring

Floor surfaces throughout the building are required to either be non-combustible or have a critical radiant flux of no less than 1.2 kW/m<sup>2</sup>, tested to ISO 9239 Part 1:2010 "Determination of the burning behaviour using a radiant heat source". This applies to flexible finishes such as carpets, vinyl sheet or tiles, and to finished or unfinished floor surfaces.

### 2.2.3 Suspended Flexible Fabrics

Suspended flexible fabrics shall have a flammability index of no less than 12, tested to AS 1530 Part 2.

## 2.3 Egress Systems

### 2.3.1 Egress Routes

Escape routes are to be kept clear at all times and not obstructed by goods or building contents.

### 2.3.2 Egress Height Requirements

Minimum height requirements are as follows:

- Clear height of escape route = 2100 mm;
- Clear height of door within escape route = 1955 mm.

### 2.3.3 Egress Width Requirements

The following escape route widths are required for the building:

Table 2: Egress width requirements

Escape route	Minimum width required (mm)
Open path	850 (1200 for accessible route)
Open path doors	600 (760 for accessible route)

### 2.3.4 Locking Devices

Locking devices (when the building is legally occupied) shall:

- Be clearly visible, located where such a device would be normally expected, designed to easily operate without a key and allow the door to open in the normal manner. If the operation of a locking device is unusual, such as the pressing of a button close to the door, it shall have signage that complies with NZBC F8.3.1, and
- If of an electromagnetic type, in the event of a power failure or door malfunction or fire alarm activation, either:
  - Automatically switch to the unlocked (failsafe) condition, or
  - Be readily opened by an alternative method satisfying the requirements of the above.





### **2.3.5 Simple Fastenings**

Doors on escape routes (whether or not the doors are fire doors) shall be fitted with simple fastenings that can be easily operated from the direction from which people approach when making their escape.

### **2.3.6 Signs**

Install illuminated EXIT signs (where not already existing) in accordance with F8/AS1 and AS/NZS 2293-3:1995. Indicative exit sign locations are provided in fire drawings in section 3.



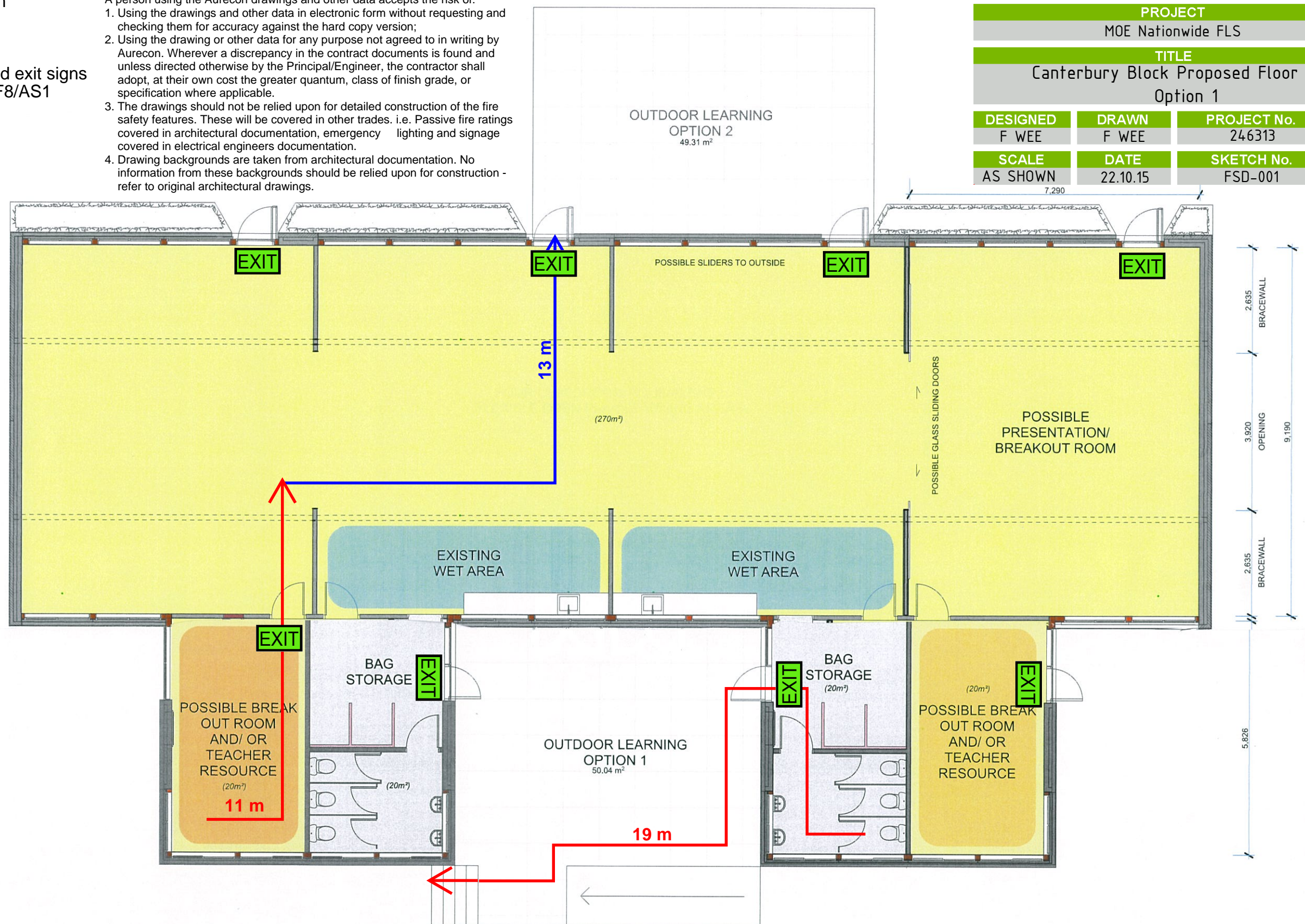
# 3 Fire Drawings



- ➔ Dead end open path
- ➔ Total open path
- EXIT** Indicative illuminated exit signs locations to NZBC F8/AS1

- A person using the Aurecon drawings and other data accepts the risk of:
1. Using the drawings and other data in electronic form without requesting and checking them for accuracy against the hard copy version;
  2. Using the drawing or other data for any purpose not agreed to in writing by Aurecon. Wherever a discrepancy in the contract documents is found and unless directed otherwise by the Principal/Engineer, the contractor shall adopt, at their own cost the greater quantum, class of finish grade, or specification where applicable.
  3. The drawings should not be relied upon for detailed construction of the fire safety features. These will be covered in other trades. i.e. Passive fire ratings covered in architectural documentation, emergency lighting and signage covered in electrical engineers documentation.
  4. Drawing backgrounds are taken from architectural documentation. No information from these backgrounds should be relied upon for construction - refer to original architectural drawings.

PROJECT			
MOE Nationwide FLS			
TITLE			
Canterbury Block Proposed Floor Plan Option 1			
DESIGNED	DRAWN	PROJECT No.	SIZE
F WEE	F WEE	246313	A3
SCALE	DATE	SKETCH No.	REV
AS SHOWN	22.10.15	FSD-001	B



**OPTION ①**

**REV 27.07.2015**

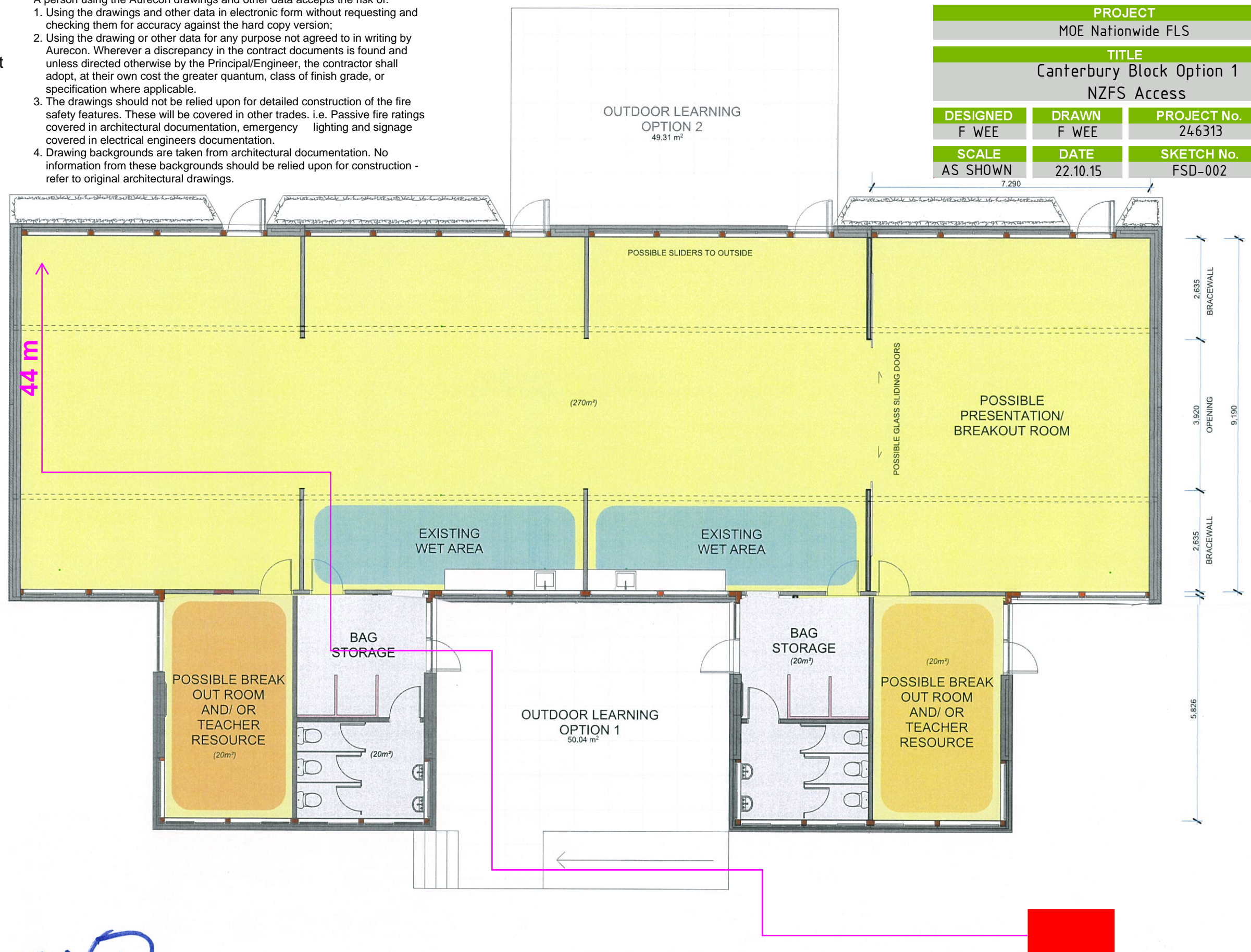
ARCHITECT	CLIENT	PROJECT	DRAWING TITLE	DRAWING INFO	JOB No.	DRAWING No.	REV.
Ph +64 9 303 1821 512 Canterbury Arcade 47 High Street AUCKLAND 1010 NEW ZEALAND <b>BREWER DAVIDSON</b> architecture & urban design BrewerDavidson Architects Ltd	Ministry of Education	CANTERBURY BLOCK	MLE UPGRADE OPTION 1	Drawn Date 06/06/2015 Original Scale (A3) 0 10 20 30 40	1501	C004	BC



→ NZFS hose run  
■ NZFS access point

- A person using the Aurecon drawings and other data accepts the risk of:
1. Using the drawings and other data in electronic form without requesting and checking them for accuracy against the hard copy version;
  2. Using the drawing or other data for any purpose not agreed to in writing by Aurecon. Wherever a discrepancy in the contract documents is found and unless directed otherwise by the Principal/Engineer, the contractor shall adopt, at their own cost the greater quantum, class of finish grade, or specification where applicable.
  3. The drawings should not be relied upon for detailed construction of the fire safety features. These will be covered in other trades. i.e. Passive fire ratings covered in architectural documentation, emergency lighting and signage covered in electrical engineers documentation.
  4. Drawing backgrounds are taken from architectural documentation. No information from these backgrounds should be relied upon for construction - refer to original architectural drawings.

PROJECT			
MOE Nationwide FLS			
TITLE			
Canterbury Block Option 1 NZFS Access			
DESIGNED	DRAWN	PROJECT No.	SIZE
F WEE	F WEE	246313	A3
SCALE	DATE	SKETCH No.	REV
AS SHOWN	22.10.15	FSD-002	B



**OPTION ①**

**REV 27.07.2015**

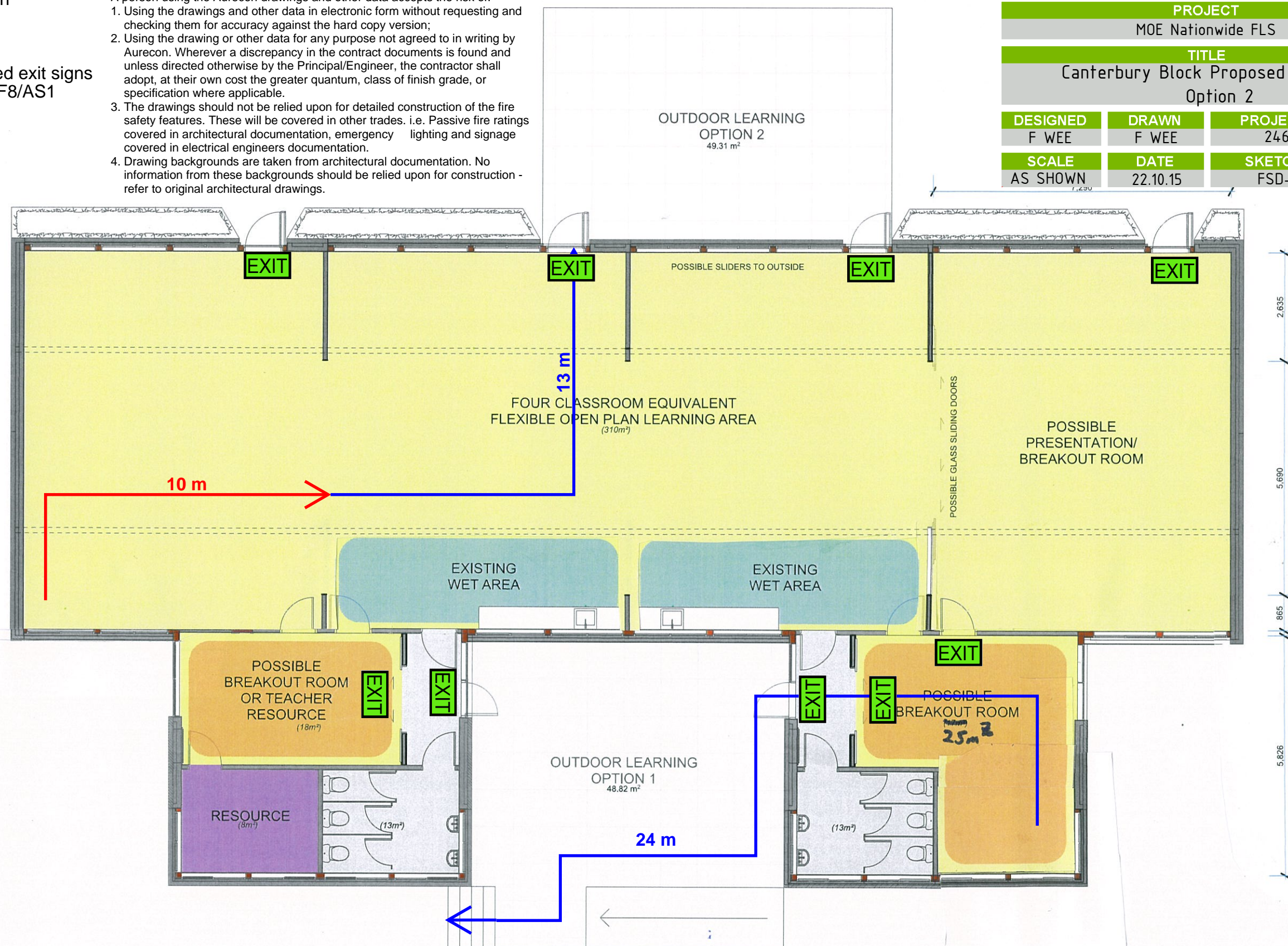
ARCHITECT	CLIENT	PROJECT	DRAWING TITLE	DRAWING INFO	JOB No.	DRAWING No.	REV.
Ph +64 9 303 1821 512 Canterbury Arcade 47 High Street AUCKLAND 1010 NEW ZEALAND <b>BREWER DAVIDSON</b> architecture & urban design BrewerDavidson Architects Ltd	Ministry of Education	CANTERBURY BLOCK	MLE UPGRADE OPTION 1	Drawn Date 06/06/2015 Original Scale (A3) 0 10 20 30 40	1501	C004	BC



- ➔ Dead end open path  
➔ Total open path  
**EXIT** Indicative illuminated exit signs locations to NZBC F8/AS1

- A person using the Aurecon drawings and other data accepts the risk of:
1. Using the drawings and other data in electronic form without requesting and checking them for accuracy against the hard copy version;
  2. Using the drawing or other data for any purpose not agreed to in writing by Aurecon. Wherever a discrepancy in the contract documents is found and unless directed otherwise by the Principal/Engineer, the contractor shall adopt, at their own cost the greater quantum, class of finish grade, or specification where applicable.
  3. The drawings should not be relied upon for detailed construction of the fire safety features. These will be covered in other trades. i.e. Passive fire ratings covered in architectural documentation, emergency lighting and signage covered in electrical engineers documentation.
  4. Drawing backgrounds are taken from architectural documentation. No information from these backgrounds should be relied upon for construction - refer to original architectural drawings.

PROJECT			
MOE Nationwide FLS			
TITLE			
Canterbury Block Proposed Floor Plan Option 2			
DESIGNED	DRAWN	PROJECT No.	SIZE
F WEE	F WEE	246313	A3
SCALE	DATE	SKETCH No.	REV
AS SHOWN	22.10.15	FSD-003	B



**OPTION 2**

**REV 27.07.2015**

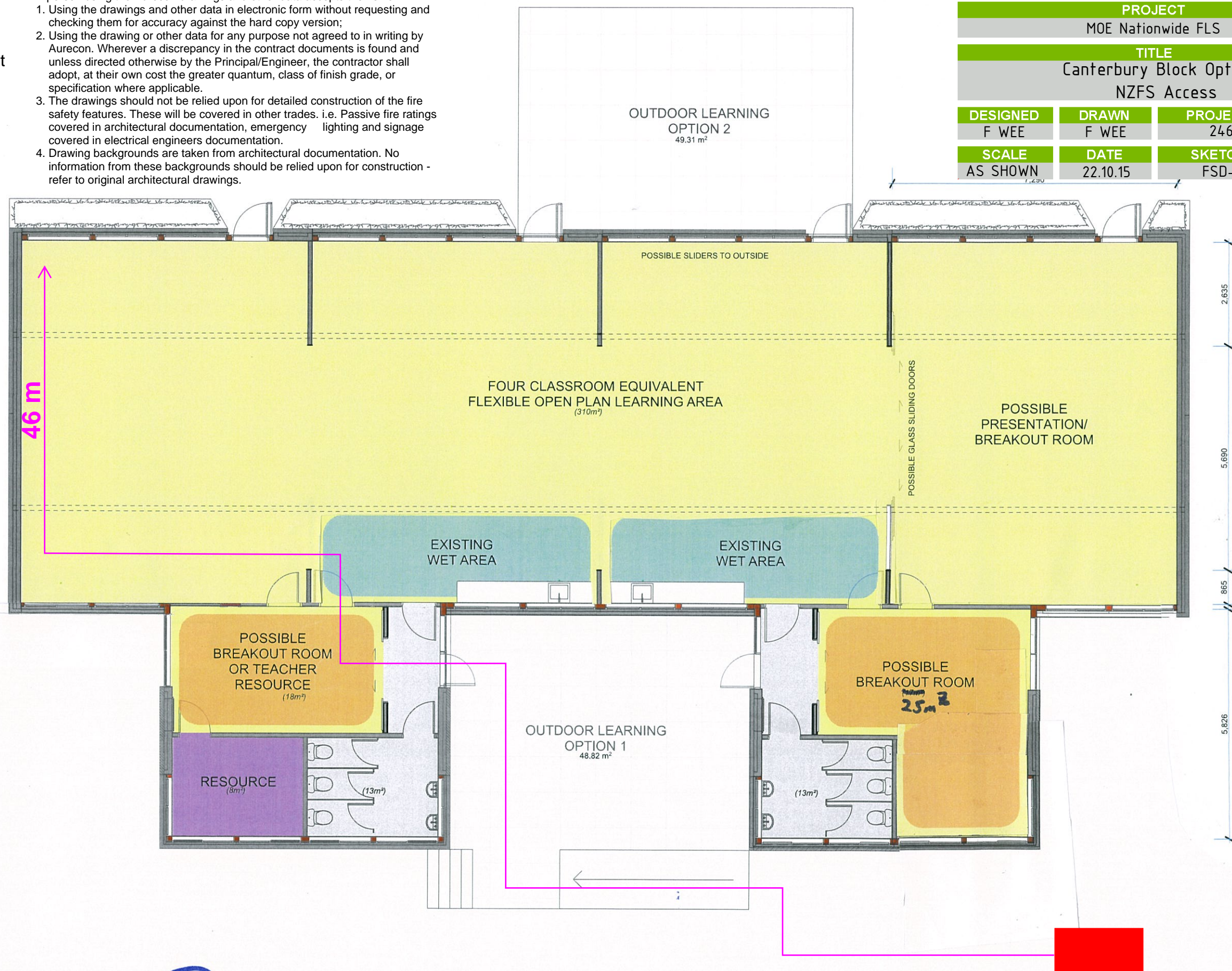
ARCHITECT	CLIENT	PROJECT	DRAWING TITLE	DRAWING INFO	JOB No.	DRAWING No.	REV.
Ph +64 9 303 1821 512 Canterbury Arcade 47 High Street AUCKLAND 1010 NEW ZEALAND <b>BREWER DAVIDSON</b> architecture & urban design BrewerDavidson Architects Ltd	Ministry of Education	CANTERBURY BLOCK	MLE UPGRADE OPTION 2	Drawn Date 07/06/2015 Original Scale (A3) 0 10 20 30 40	1501	C003	<b>XB</b>



→ NZFS hose run  
■ NZFS access point

- A person using the Aurecon drawings and other data accepts the risk of:
1. Using the drawings and other data in electronic form without requesting and checking them for accuracy against the hard copy version;
  2. Using the drawing or other data for any purpose not agreed to in writing by Aurecon. Wherever a discrepancy in the contract documents is found and unless directed otherwise by the Principal/Engineer, the contractor shall adopt, at their own cost the greater quantum, class of finish grade, or specification where applicable.
  3. The drawings should not be relied upon for detailed construction of the fire safety features. These will be covered in other trades. i.e. Passive fire ratings covered in architectural documentation, emergency lighting and signage covered in electrical engineers documentation.
  4. Drawing backgrounds are taken from architectural documentation. No information from these backgrounds should be relied upon for construction - refer to original architectural drawings.

PROJECT			
MOE Nationwide FLS			
TITLE			
Canterbury Block Option 2 NZFS Access			
DESIGNED	DRAWN	PROJECT No.	SIZE
F WEE	F WEE	246313	A3
SCALE	DATE	SKETCH No.	REV
AS SHOWN	22.10.15	FSD-004	B



**OPTION 2**

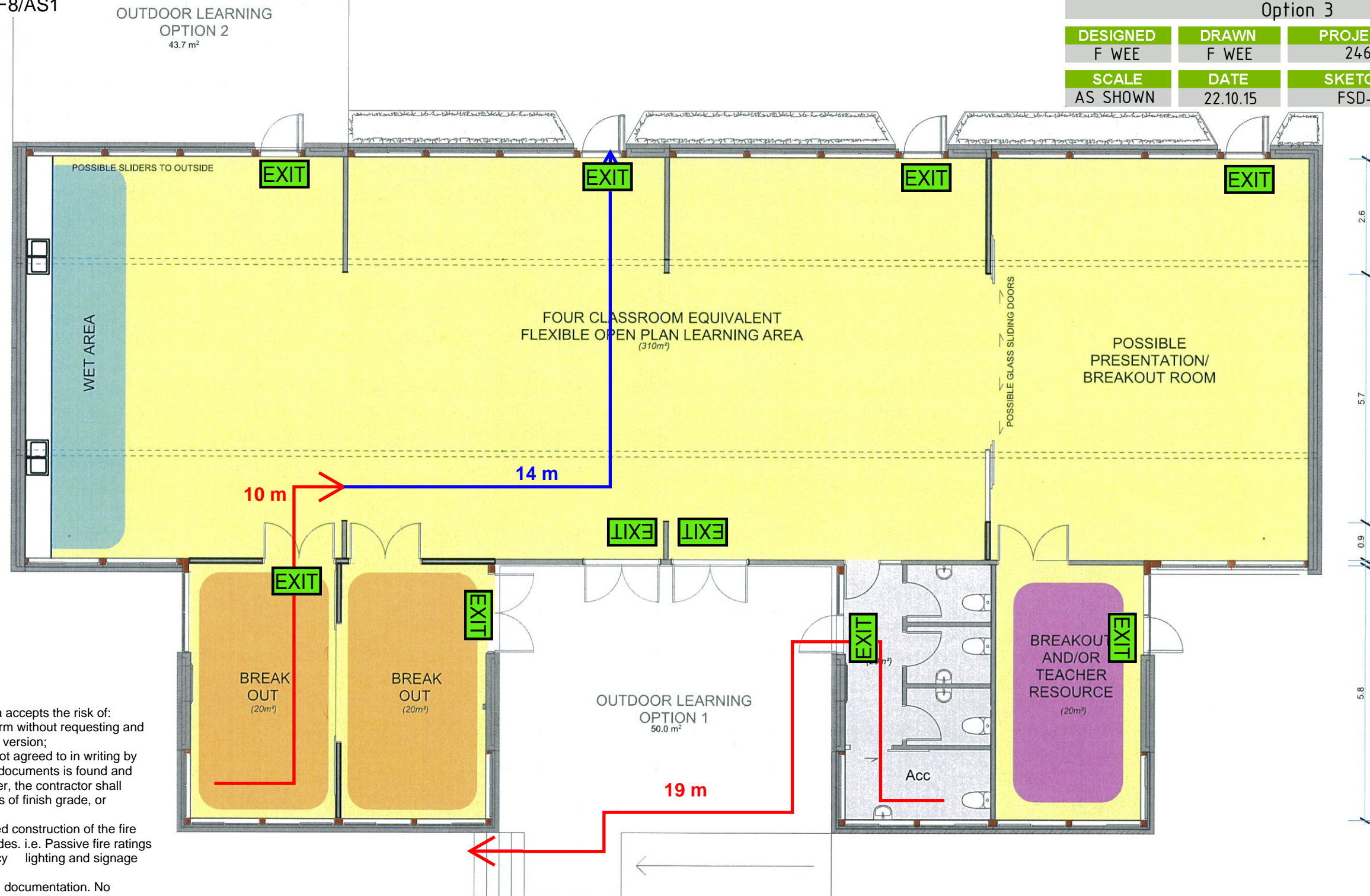
**REV 27.07.2015**

ARCHITECT	CLIENT	PROJECT	DRAWING TITLE	DRAWING INFO	JOB No.	DRAWING No.	REV.
Ph +64 9 303 1821 512 Canterbury Arcade 47 High Street AUCKLAND 1010 NEW ZEALAND <b>BREWER DAVIDSON</b> architecture & urban design BrewerDavidson Architects Ltd	Ministry of Education	CANTERBURY BLOCK	MLE UPGRADE OPTION 2	Drawn Date 07/06/2015 Original Scale (A3) 0 10 20 30 40	1501	C003	<b>XB</b>



PROJECT			
MOE Nationwide FLS			
TITLE			
Canterbury Block Proposed Floor Plan Option 3			
DESIGNED	DRAWN	PROJECT No.	SIZE
F WEE	F WEE	246313	A3
SCALE	DATE	SKETCH No.	REV
AS SHOWN	22.10.15	FSD-005	B

- ➔ Dead end open path  
➔ Total open path  
**EXIT** Indicative illuminated exit signs  
locations to NZBC F8/AS1



- A person using the Aurecon drawings and other data accepts the risk of:
- Using the drawings and other data in electronic form without requesting and checking them for accuracy against the hard copy version;
  - Using the drawing or other data for any purpose not agreed to in writing by Aurecon. Wherever a discrepancy in the contract documents is found and unless directed otherwise by the Principal/Engineer, the contractor shall adopt, at their own cost the greater quantum, class of finish grade, or specification where applicable.
  - The drawings should not be relied upon for detailed construction of the fire safety features. These will be covered in other trades. i.e. Passive fire ratings covered in architectural documentation, emergency lighting and signage covered in electrical engineers documentation.
  - Drawing backgrounds are taken from architectural documentation. No information from these backgrounds should be relied upon for construction - refer to original architectural drawings.

**OPTION 3**

ARCHITECT	CLIENT	PROJECT	DRAWING TITLE	DRAWING INFO	JOB No.	DRAWING No.	REV.
Ph +64 9 303 1821 512 Canterbury Arcade 47 High Street AUCKLAND 1010 NEW ZEALAND <b>BREWER DAVIDSON</b> architecture & urban design BrewerDavidson Architects Ltd	Ministry of Education	CANTERBURY BLOCK	MLE UPGRADE OPTION 3	Drawn Date 8/06/2015 Original Scale (A3) 0 10 20 30 40	1501	C005	B

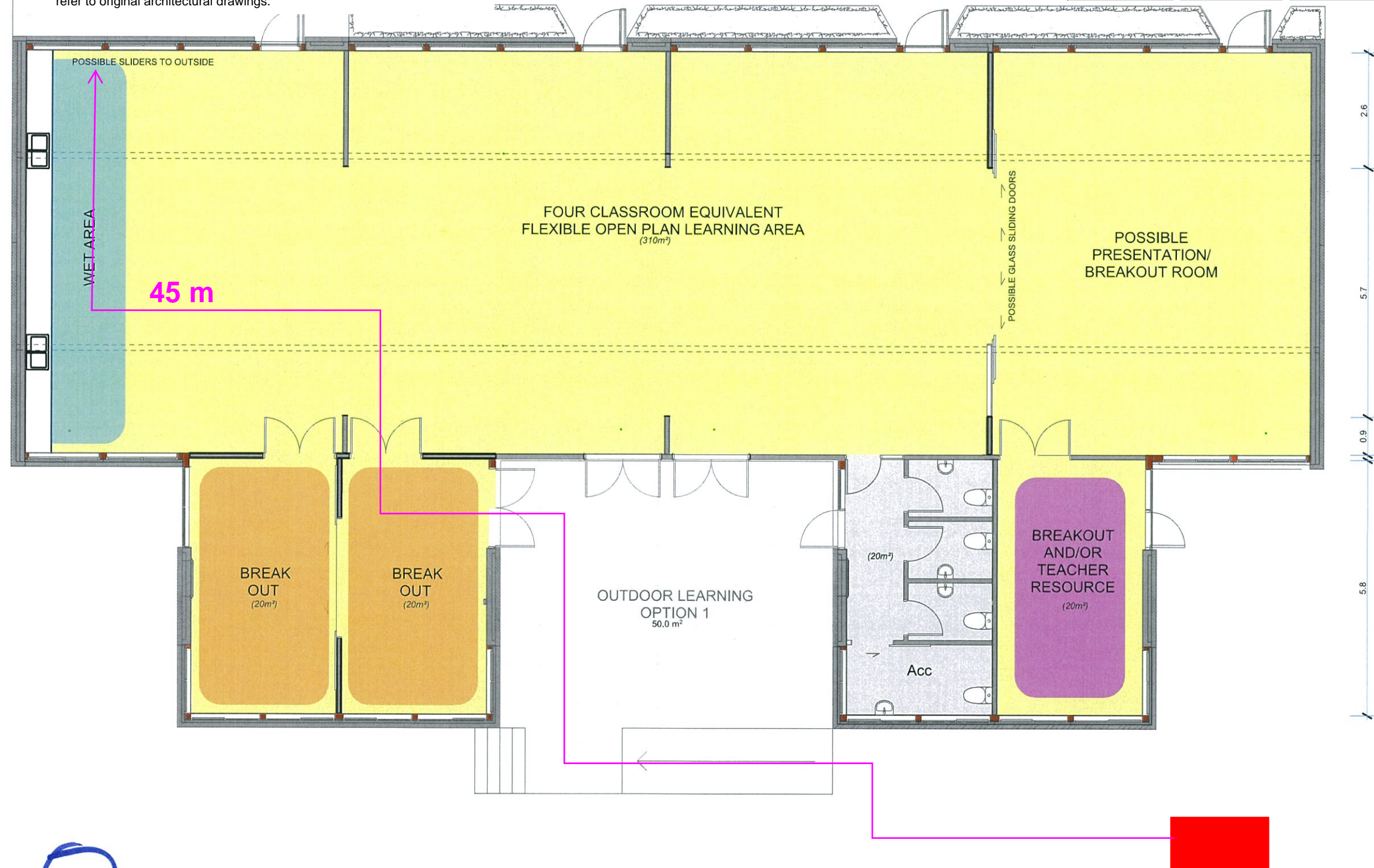
**UN CHANGED.**



➔ NZFS hose run  
■ NZFS access point

- A person using the Aurecon drawings and other data accepts the risk of:
1. Using the drawings and other data in electronic form without requesting and checking them for accuracy against the hard copy version;
  2. Using the drawing or other data for any purpose not agreed to in writing by Aurecon. Wherever a discrepancy in the contract documents is found and unless directed otherwise by the Principal/Engineer, the contractor shall adopt, at their own cost the greater quantum, class of finish grade, or specification where applicable.
  3. The drawings should not be relied upon for detailed construction of the fire safety features. These will be covered in other trades. i.e. Passive fire ratings covered in architectural documentation, emergency lighting and signage covered in electrical engineers documentation.
  4. Drawing backgrounds are taken from architectural documentation. No information from these backgrounds should be relied upon for construction - refer to original architectural drawings.

PROJECT			
MOE Nationwide FLS			
TITLE			
Canterbury Block Option 3 NZFS Access			
DESIGNED	DRAWN	PROJECT No.	SIZE
F WEE	F WEE	246313	A3
SCALE	DATE	SKETCH No.	REV
AS SHOWN	22.10.15	FSD-006	B



OPTION ③

ARCHITECT	CLIENT	PROJECT	DRAWING TITLE	DRAWING INFO	JOB No.	DRAWING No.	REV.
Ph +64 9 303 1821 512 Canterbury Arcade 47 High Street AUCKLAND 1010 NEW ZEALAND <b>BREWER DAVIDSON</b> architecture & urban design BrewerDavidson Architects Ltd	Ministry of Education	CANTERBURY BLOCK	MLE UPGRADE OPTION 3	Drawn Date 8/06/2015 Original Scale (A3) 0 10 20 30 40	1501	C005	B

UN CHANGED.



# 4 Design Philosophy

## 4.1 Legal Environment

The building work is internal alteration only and is therefore alterations to an existing building, and as such is required by section 112 of the Building Act: 2004 to comply with the relevant Building Code (NZBC) requirements for means of escape from fire, and to continue to comply with the other provisions of the Building Code to at least the same extent as before the alteration.

This report addresses the fire safety requirements of NZBC Clauses C1 to C6 Protection from Fire, and additionally the requirements of the MOE Fire and Safety Design Requirements for Schools 2008 and M.O.E Designing Schools in New Zealand- Requirements and Guidelines (v. 1.0) October 2015.

## 4.2 Design Philosophy

### 4.2.1 Design Intent and Method

The design philosophy is to consider the proposal against the Acceptable Solution C/AS4 amendment 3 in demonstrating compliance with NZBC C1 to C6 'Protection from Fire'.

### 4.2.2 Duty of Care

The emphases of the fire safety provisions of the NZBC are those of health and safety and protection of other property. These emphases do not include for amenity or protection of one's own property.

## 4.3 Information Reviewed

This report is based on drawings by Brewer Davidson Architects Ltd.

Table 3: Reviewed drawings

Drawing Title	Drawing No.	Rev.	Date
Canterbury Block MLE Upgrade Option 1	1501-C004	C	27/07/2015
Canterbury Block MLE Upgrade Option 2	1501-C003	B	27/07/2015
Canterbury Block MLE Upgrade Option 3	1501-C005	B	8/06/2015

## 4.4 Distribution

The requirements of this report affect many aspects of the building design. We recommend that this report be distributed to all relevant parties for their review and implementation as appropriate. The distribution list should typically include, but not be limited to, the following parties.

- Building owner / developer
- Project manager
- Architect / designer
- Structure Engineer
- HVAC engineer
- Electrical engineer
- Fire protection engineer
- Building contractor and relevant subcontractors.

# 5 Building Description and Use

## 5.1 Introduction and Description of Proposal

The standard single-storey, four-classroom Canterbury Block of Ministry of Education (MOE) is a standard classroom block constructed at various schools throughout New Zealand. Construction consists of a light-weight timber frame with weatherboard or brick façade and corrugated iron roofing. Typically, existing Canterbury Blocks consisted of four classrooms with shared cloakroom and toilets.

The proposed work is to upgrade the existing standard four-classroom Canterbury Block to become a “Flexible Learning Space (FLS)” upgrade of MOE, previously referred to as “Modern Learning Environment (MLE)”. Three options of similar layout have been considered for the Canterbury Block FLS upgrade - options 1, 2 and 3.

Option 1 consists of four interconnected classrooms equivalent in size with two breakout rooms and two toilet and bag storage areas.

Option 2 also consists of four interconnected classrooms equivalent in size but with two breakout rooms, two toilets and a resource room.

Option 3 also consists of four interconnected classrooms equivalent in size but with three breakout rooms and a toilet.

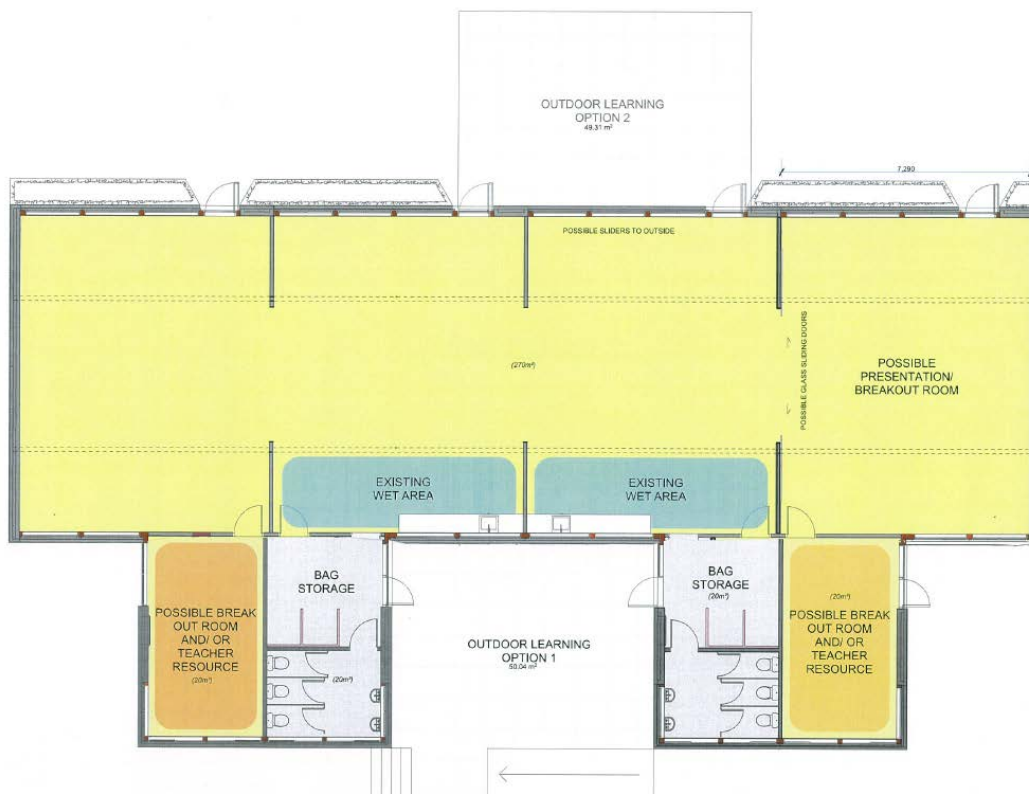


Figure 1: Canterbury Block FLS upgrade option 1



# 6 Fire Safety Assessment

## 6.1 Building Importance Level

The Canterbury Block buildings have an **Importance Level of 2** as defined in the NZBC Clause A3. The buildings are considered to pose a normal level of risk to human life, the environment and economic loss should the building fail. Therefore no special requirements need to be considered beyond that required by the NZBC.

## 6.2 Evacuation Scheme

The buildings are to operate on a school-wide all-out evacuation scheme.

## 6.3 Occupant Assessment

### 6.3.1 General

The building will contain students and staff who are expected to be familiar with the building layout and fire evacuation procedures.

### 6.3.2 Occupant Load

Occupant load of the building is given in Table 4 below.

**Table 4: Occupancy assessment**

Option	Location	Risk Group	Escape height (m)	Occupant Density [m²/person]	Area [m²]	Occupancy [p]
1	4 x classroom	CA	0	2	70 per classroom	35 per classroom
	Breakout rooms	CA		2	40	20 <sup>[1]</sup>
Total for option 1						140
2	4 x classroom	CA	0	2	70 per classroom	35 per classroom
	Breakout rooms	CA		2	43	22 <sup>[1]</sup>
	Resource room	CA		100	8	1 <sup>[1]</sup>
Total for option 2						140
3	4 x classroom	CA	0	2	70 per classroom	35 per classroom
	Breakout rooms	CA		2	60	30 <sup>[1]</sup>
Total for option 3						140

Note:

<sup>[1]</sup> The occupant load in the breakout rooms and resource room does not count towards the total occupants load as they are already included as occupants from the classrooms and not counted twice.

## 6.4 Fire Safety Systems and Fire Resistance Ratings

### 6.4.1 Provision of Firecells

For all options Canterbury Block is considered one firecell with a building footprint approximately 400 m<sup>2</sup>. There are no Building Code requirements to provide internal fire separations to limit the floor area of firecells unless the total floor area of the building exceeds 5,000 m<sup>2</sup>.

Although under the requirements of the MOE Fire and Safety Design Requirements for Schools 2008 2.8/3(a): 'It is a Ministry of Education requirement (not a Building Code requirement) that except where sprinklered, school blocks should be divided into firecells with fire separations of (60)/60/60, containing not more than three classrooms (with associated corridor space) to limit the firecell size to approximately 270 m<sup>2</sup>'. However, refer to MOE Designing Schools in New Zealand- Requirements and Guidelines (v. 1.0) October 2015 part 7.12, it is anticipated that firecells of up to four classroom equivalent spaces will be accepted in the upcoming change to the existing MOE Fire and Safety Design Requirements for Schools 2008 2.8/3(a). Therefore the single firecell with four classroom equivalent spaces proposed is expected to be acceptable.

### 6.4.2 Overall Fire Safety Systems

Table 5 outlines the required fire safety systems in the building.

Table 5: Minimum fire safety Systems (FSSs) requirement

Option	Firecell	Escape height (m)	Risk Group	Occupant load [p]	Required Fire safety systems	Required Fire Resistance Ratings
1	Classroom	0	CA	140	2	Life rating 60 Property rating 120
2	Classroom	0	CA	140		
3	Classroom	0	CA	140		

For either Option 1, 2 or 3, the following fire safety systems are required to be installed throughout the Formula Blocks to comply with C/AS4:

- Type 2 manual fire alarm system with call points and sounders to NZS 4512: 2010 (or to the standard to which they were installed if an existing Type 2 alarm system). A direct connection with the NZFS is not required on the basis that a phone is available for emergency calls.
- The Fire Service hose run distance from the likely point of Fire Service vehicular access to any point within the building is less than 75 m, hence a building fire hydrant system is not required.
- There are no C/AS4 (Building Code) requirements for internal fire separations. Ministry of Education fire ratings are discussed in section 6.6 below.
- Emergency lighting is not required within the classrooms as the escape path lengths are less than 20 m and there are no changes in level as discussed in 6.5.7 below.

## 6.5 Means of Escape

### 6.5.1 Number and Location of Escape Routes

Refer to C/AS4 3.2 'number of escape routes' and Table 3.1.

Single means of escape for the possible presentation / breakout room, breakout rooms and bag storage areas for either Option 1, 2 or 3 meets the single means of escape requirements as follows:

- The open path length does not exceed the allowable travel distance as specified in Table 7;
- The total occupant load of each classroom is no greater than 50;

- There are no pre-school children;
- The escape height is no greater than 10 m (0 m); and
- There is no basement level below ground.

Each classroom except the possible presentation / breakout room (in each option) have two means of escape either directly to the outside or via adjacent classrooms. Escape via adjacent classrooms is permitted as it meets C/AS4 3.6.3 requirements as follows:

- The number of occupants in each classroom does not exceed 100 (35 people); and
- The escape route does not pass a space which may be locked (classrooms open to each other).

## 6.5.2 Escape Route Heights

The height of an escape route is to be a minimum of 2,100 mm, and any doors are required to have a minimum clear height of 1,955mm (C/AS4 3.3.1).

## 6.5.3 Escape Route Widths

Refer to C/AS4 3.3.2.

Table 6 below details the minimum widths of escape routes in the building.

**Table 6: Individual escape route width requirements**

Location	Minimum width (mm)
Open paths	850 (1200 for accessible route)
Final exit doors	760

## 6.5.4 Escape Route Lengths

Refer to C/AS4 3.4 and Table 3.2.

Worst case escape route lengths (as indicated on the fire drawings) are assessed to comply with the travel distance requirements.

**Table 7: Maximum permitted escape route lengths**

Option	Location	Travel Distances			
		Permitted DEOP (m)	Actual DEOP (m)	Permitted TOP (m)	Actual TOP (m)
1	Possible breakout room and/or teacher resource	20	11	50	24
	Toilet	20	19	50	19
2	Possible breakout room	20	0	50	24
	Classroom	20	10	50	23
3	Break out room	20	10	50	24
	Toilet	20	19	50	19





## 6.5.5 Door Opening and Locking devices

### Direction of opening

Doors on escape routes are required to open in the direction of escape if there are more than 50 occupants using the doors (C/AS4 /3.15.3). Doors in the building comply with this requirement.

Refer to C/AS4 3.15.1, manual sliding door of small breakout rooms of Option 2 are permitted as the number of occupants of small breakout room using the manual sliding door is less than 20.

### Locking devices

Locking devices (when the building is legally occupied) shall:

- Be clearly visible, located where such a device would be normally expected, designed to easily operate without a key and allow the door to open in the normal manner. If the operation of a locking device is unusual, such as the pressing of a button close to the door, it shall have signage that complies with NZBC F8.3.1, and
- If of an electromagnetic type, in the event of a power failure or door malfunction or fire alarm activation, either:
  - Automatically switch to the unlocked (failsafe) condition, or
  - Be readily opened by an alternative method satisfying the requirements of the above.

## 6.5.6 Exit Signage

Install illuminated EXIT signs in accordance with F8/AS1 and AS/NZS 2293-3:1995. Indicative exit sign locations are provided on the fire drawings in section 3.

## 6.5.7 Emergency Lighting

Emergency lighting is not required within the classrooms as the escape path length is less than 20 m and there are no changes in level.

At some school sites the Canterbury Block may have a step from the terrace to ground level. However given that the step is effectively outside the building, and that the classrooms are normally only occupied during daylight hours then we propose that emergency lighting need not be provided.

## 6.6 Internal Spread of Fire and Smoke

### 6.6.1 Fire/Smoke Separations

#### 6.6.1.1 MOE requirements

The building is proposed as one firecell and acceptable to the MOE Designing Schools in New Zealand- Requirements and Guidelines (v. 1.0) October 2015 part 7.12. Refer also to 6.4.1.

### 6.6.2 Surface Finishes

New surface finishes within the building are required to meet the requirements of C/AS4 Table 4.1. Refer Scope of Works sections 2.2.1, 2.2.2 and 2.2.3.

## 6.7 External Fire Spread

### 6.7.1 Horizontal Fire Spread

Where a building is undergoing internal alterations only, the Building Code does not require that external fire spread be considered.

*Notwithstanding the above there are MOE requirements for minimum separation distances between buildings on a school site. Given that the distance between buildings on any particular site varies from school to school, and that after the proposed work being internal alteration only the likelihood of fire*



*spread between adjacent buildings will be no worse than before the alterations then the separation distances between buildings need not be addressed further.*

### **6.7.2 External Surface Finishes**

Exterior surface finishes will not be affected by the proposed work due to being internal alterations only, therefore existing finishes may remain as is.

## **6.8 Fire Fighting**

### **6.8.1 Fire Service Vehicular Access**

The proposed work involves internal alterations only to an existing building and Fire Service vehicular access need not be assessed.

## **6.9 Conclusion**

This fire engineering report has assessed NZBC compliance in respect to the fire safety clauses C1 to C6 of the NZBC, by using the Acceptable Solution C/AS4 amendment 3, and the MOE 'Fire Safety and Design Requirements for Schools (July 2008)'.

This report demonstrates that Options 1, 2 and 3 for the proposed FLS upgrade of Formula Blocks at various Ministry of Education schools throughout New Zealand will be in compliance with the objectives of the NZBC C1 to C6 'Protection from Fire' to the extent required by the Building Act, the MOE Fire and Safety Design Requirements for Schools 2008, and the MOE Designing Schools in New Zealand- Requirements and Guidelines (v. 1.0) October 2015 based on implementation of the Scope of Works described in this report.



**Aurecon New Zealand Ltd**

Level 1, 102 Customhouse Quay

Wellington 6011

PO Box 1591

Wellington 6140

New Zealand

**T** +64 4 472 9589

**F** +64 4 472 9922

**E** [fire@aurecongroup.com](mailto:fire@aurecongroup.com)

**W** [aurecongroup.com](http://aurecongroup.com)

Aurecon offices are located in:

Angola, Australia, Bahrain, Botswana,  
China, Ethiopia, Hong Kong, Indonesia,  
Lesotho, Libya, Malawi, Mozambique,  
Namibia, New Zealand, Nigeria,  
Philippines, Singapore, South Africa,  
Swaziland, Tanzania, Thailand, Uganda,  
United Arab Emirates, Vietnam.