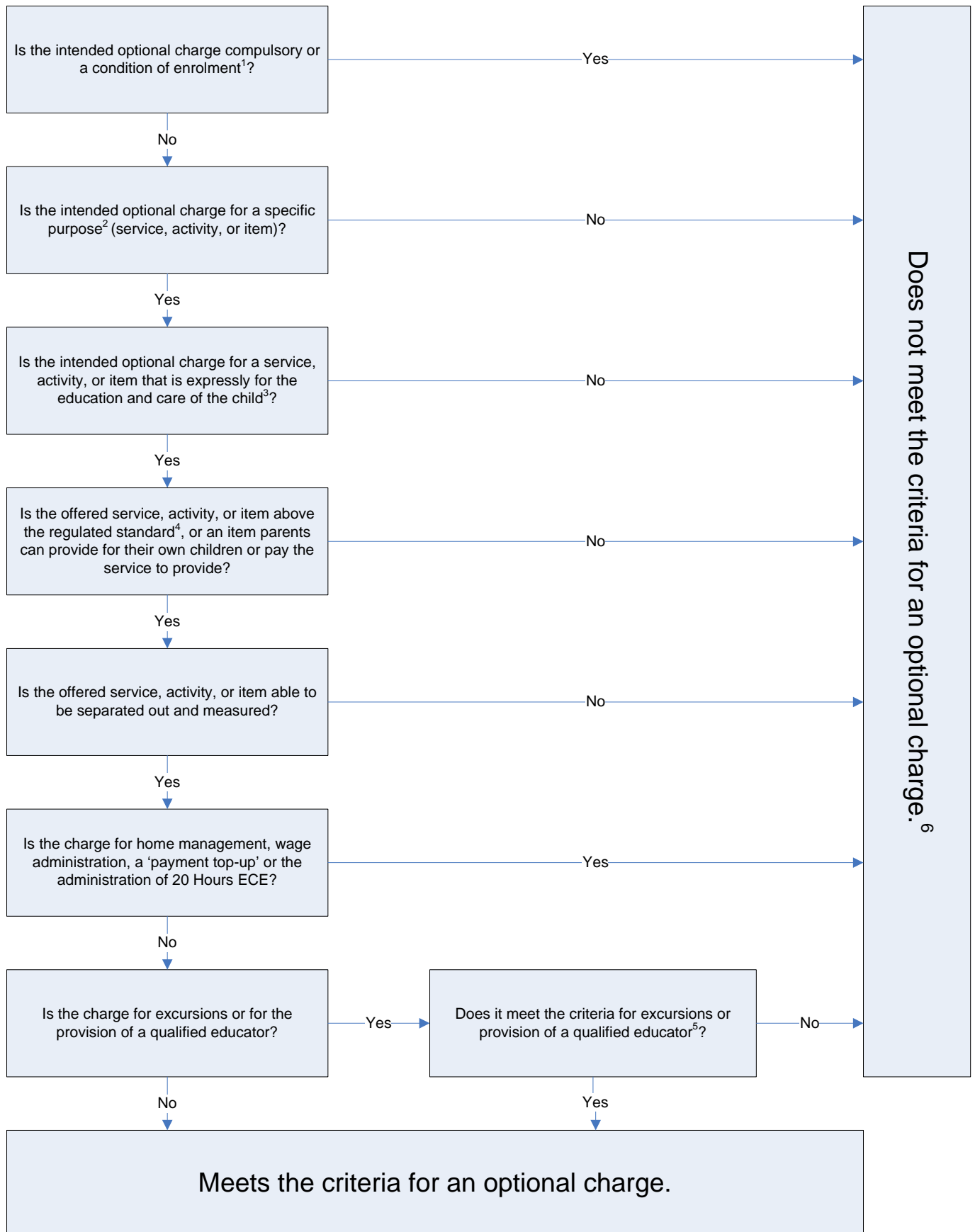


20 Hours ECE

Optional Charges Decision Flowchart for Services



1. Initial or continued enrolment can not be conditional upon parents agreeing to pay an optional charge, nor can agreement be compulsory. Parents must be informed in writing that agreeing to an optional charge is not compulsory, and that they will not be penalised for choosing not to pay an optional charge.
 2. An optional charge can not be, for example, a general charge for future activities or items than can not yet be measured.
 3. The activity or item must benefit the learner and directly enhance the quality of education and care they receive.
 4. An optional charge must not be requested for a service, activity, or item which sits outside of the regulatory framework, or supports the service to meet the regulated standard.
 5. See the main text on Education.govt.nz for further information about optional charges for excursions and for qualified home-based educators.
 6. If the intended optional charge does not meet the criteria of an optional charge, then an optional charge can not be requested.
- NOTE: use this flowchart together with the main text on Education.govt.nz to assist in your decision-making.